

## Double-Ended Beam Load Cell

### FEATURES

- Capacities: 1k to 75k lbs
- Environmental protection: IP67 (DIN 40.050)
- Material: stainless steel
- Center loaded design
- Welded covers for all capacities
- **Optional**
  - FM certified versions are available for use in potentially explosive atmospheres



### APPLICATIONS

- Silo, tank, hopper weighing
- Custom system designs
- Low capacity vehicle scales

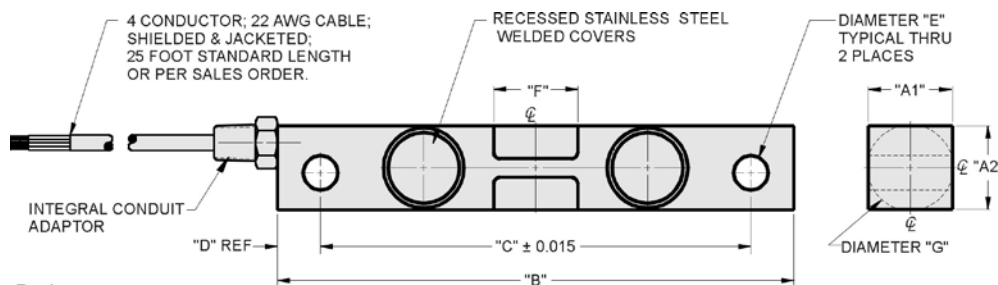
### DESCRIPTION

The 9203 is a stainless steel double-ended shear beam type load cell.

A reliable sealing and mechanical protection of the skin gage area is ensured by the use of potting compound with a metal cover.

The center-loaded design results in minimal sensitivity to off-center forces.

### OUTLINE DIMENSIONS in inches



#### Wiring

+Excitation	Red
-Excitation	Black
+Output	Green
-Output	White

CAPACITY	A <sub>1</sub>	A <sub>2</sub>	B	C	D	E	F	G	Thread
1k-5k	1.22	1.22	7.50	6.25	0.62	0.50	1.12	1.25	1/4-18NPT
10k-25k	1.44	1.94	8.75	7.50	0.62	0.81	1.62	1.99	1/4-18NPT
35k	1.44	2.44	8.75	7.50	0.62	0.81	1.62	2.50	1/4-18NPT
50k-75k	2.44	2.94	13.50	11.50	1.00	1.31	3.25	2.99	1/2-14NPT

Capacities are in pounds.

## Double-Ended Beam Load Cell

SPECIFICATIONS		
PARAMETER	VALUE	UNIT
Standard capacities (E <sub>max</sub> )	1k, 1.5k, 2k, 2.5k, 5k, 10k, 15k, 20k, 25k, 35k, 50k, 75k	lbs
Accuracy class	Non Approved—D3	
Rated output (=S)	3.0	mV/V
Rated output tolerance	0.008	±mV/V
Zero balance	1.0	±% FSO
Combined error	0.03	±% FSO
Creep error (20 minutes)	0.03	±% FSO
Temp. effect on min. dead load output	0.0015	±% FSO/5°C (°F)
Temperature effect on sensitivity	0.0008	±% FSO/5°C (°F)
Maximum safe overload	150	% E <sub>max</sub>
Ultimate overload	300	% E <sub>max</sub>
Maximum safe side load	100	% E <sub>max</sub>
Excitation voltage	10	V
Maximum excitation voltage	15	V
Input resistance	700±14	Ω
Output resistance	703±4	Ω
Insulation resistance	≥1000	MΩ
Compensated temperature range	-10 to +40 (+14 to +104)	°C (°F)
Operating temperature range	-18 to +65 (0 to +150)	°C (°F)
Element material (DIN)	Stainless steel	
Sealing	IP67	

FSO—Full Scale Output

All specifications subject to change without notice.